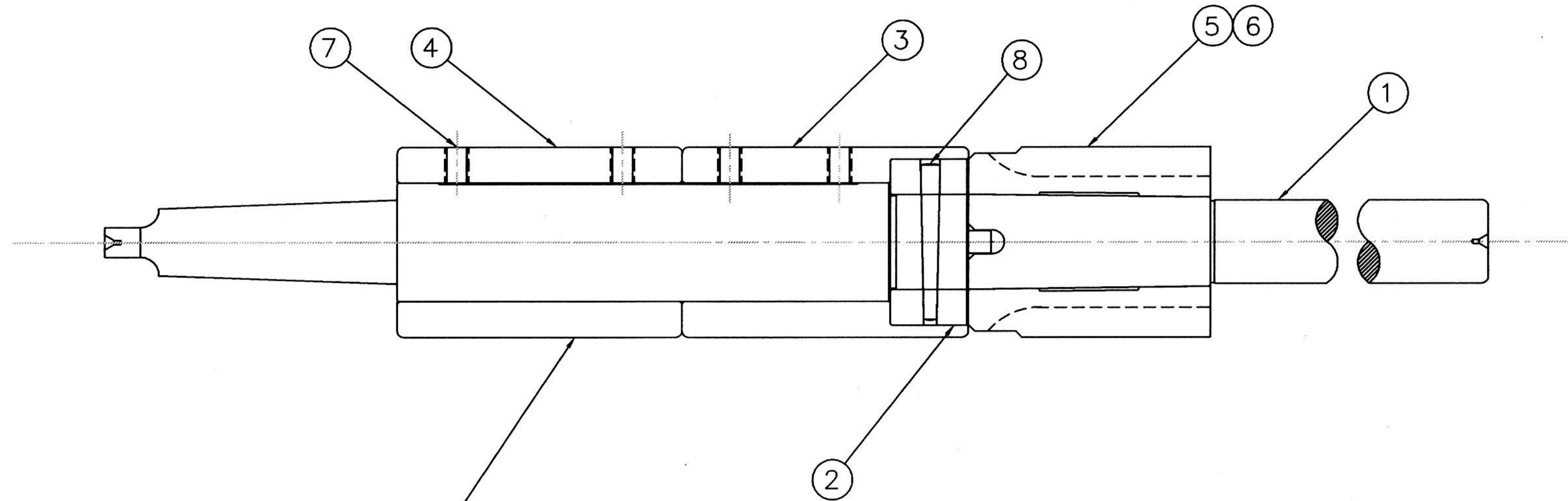


DET. #	QTY.	PART NO.	PART NAME
1	1	SMA1901	SHAFT ASS'Y.
2	1	SMA1901D2	DRIVE COLLAR
3	1	SMA1901D3-1,-2,-3,-4	FRONT BUSHINGS
4	1	SMA1901D4-1,-2,-3,-4	BUSHINGS
5	2	SMA1901D5	END CUT REAMER, $\phi 4.0$ "
6	2	SMA1901D6-1	REAMER, $\phi 4.031$ (STEP)
6	2	SMA1901D6-2	REAMER, $\phi 4.068$ (FINISH)
6	1	SMA1901D6-3	REAMER, $\phi 4.094$ (SAFETY FIN.)
7	6	1/2-20 X 5/8	S.H.C.S.
8	1	#6 X 3.25	TAPER PIN



FINISH GRIND O.D.  
OF ALL BUSHINGS AND REAMERS -1,-2 & -3  
AFTER ASS'Y TO ARBOR.  
SEE BUSHING DWGS. FOR DIMS.

REV.	DATE	DESCRIPTION
C	5/7/99	ADDED $\phi 4.031$ REAMER & BUSH'G., $\phi 4.068$ REAMER WAS $\phi 4.063$
B	3/29/99	DET. 4 WAS 2 PCS., ADDED NOTE.
A	2/25/99	
REV.	DATE	DESCRIPTION

GENERAL TOLERANCES, UNLESS NOTED

.XX DECIMALS  $\pm 0.10$   
.XXX DECIMALS  $\pm 0.005$   
SURFACE FINISH 63  $\checkmark$   
ANGLES  $\pm 1^\circ$   
BREAK ALL EDGES  
.010 X 45°  
UNLESS OTHERWISE SPECIFIED

MTP ASSOCIATES  
SANDWICH, MA

DWG. NO: SMA1901A	CUST. TOOL NO: S71391145
REV. C	DR. BY: A.J.O. DATE: 2/25/99

TITLE:  
SHELL REAMER ARBOR, ASS'Y.

MATERIAL:

