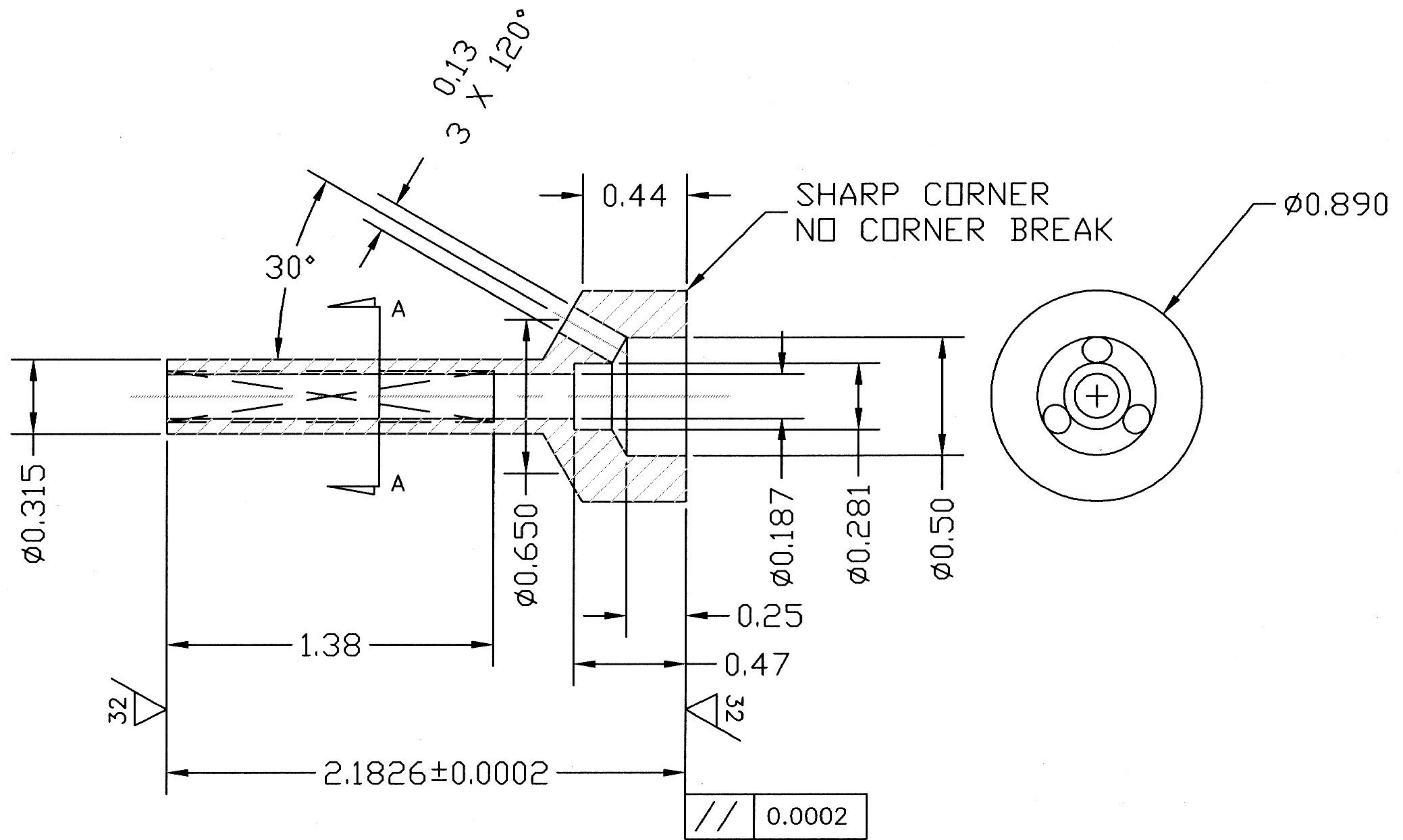
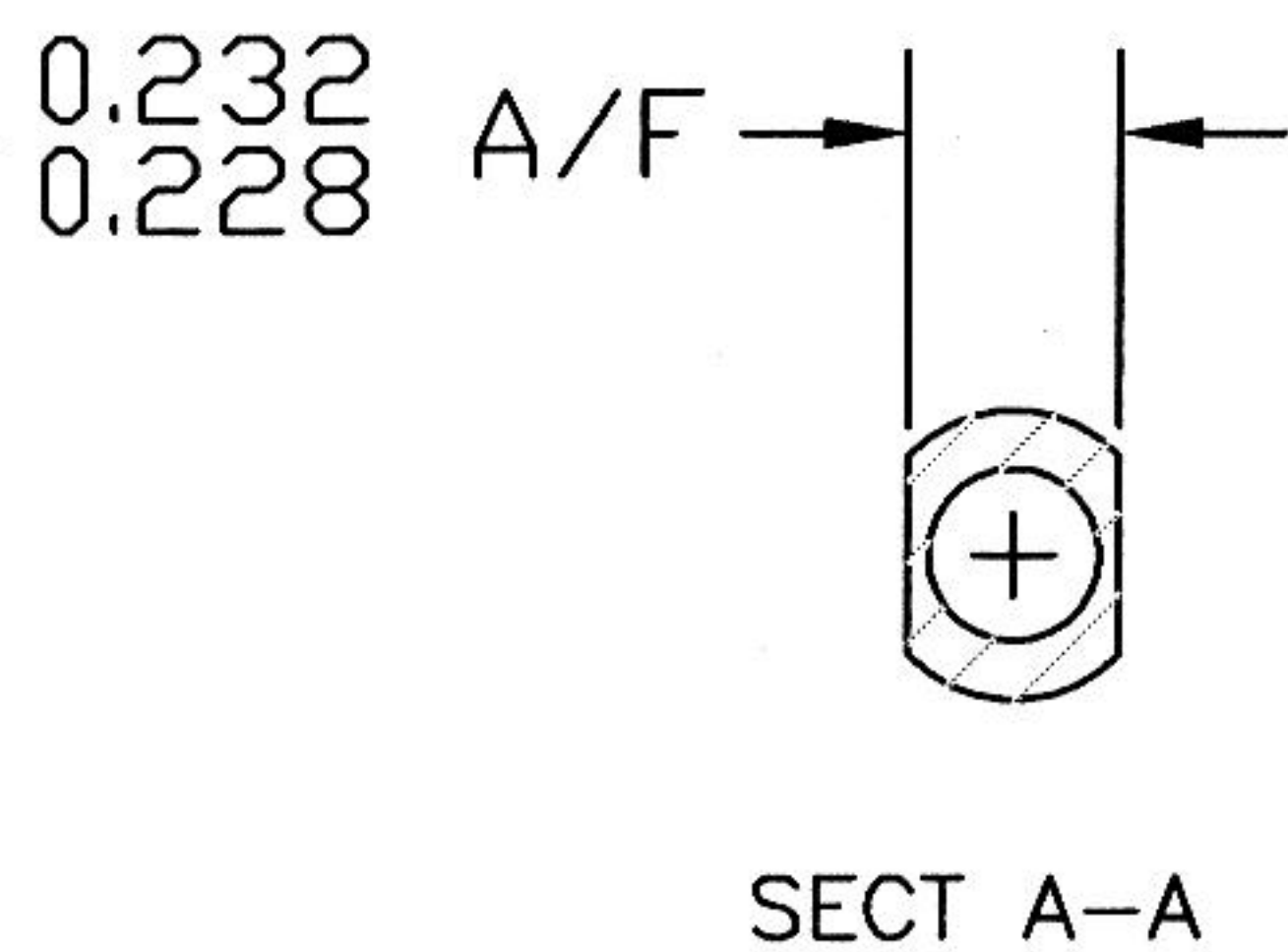


REVISIONS			
REV	DESCRIPTION	DATE	APPROVED
A	INITIAL RELEASE	1/12/04	



H/T Rc 55 - 57  
 CORNERS CHAMFERED 0.010-0.015 X 45°  
 UNLESS OTHERWISE SPECIFIED.  
 GLASS BEAD BLAST AFTER H/T AND BEFORE GRINDING.

GENERAL TOLERANCES, UNLESS NOTED  
 .XX DECIMALS ±.010  
 .XXX DECIMALS ±.005  
 .XXXX DECIMALS ±.0005  
 SURFACE FINISH 63 ✓  
 ANGLES ±1°  
 BREAK ALL EDGES  
 .010 X 45°  
 UNLESS OTHERWISE SPECIFIED

<b>MTP ASSOCIATES</b> SANDWICH, MA		
DWG. NO: EJP1901		
REV. A	DRAWN BY: A.J.O.	DATE: 1/12/04
TITLE: EJECTOR PIN		
MATERIAL: D-2 TOOL ST. (ALT, A2 OR 01)		

